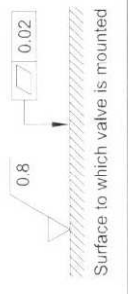
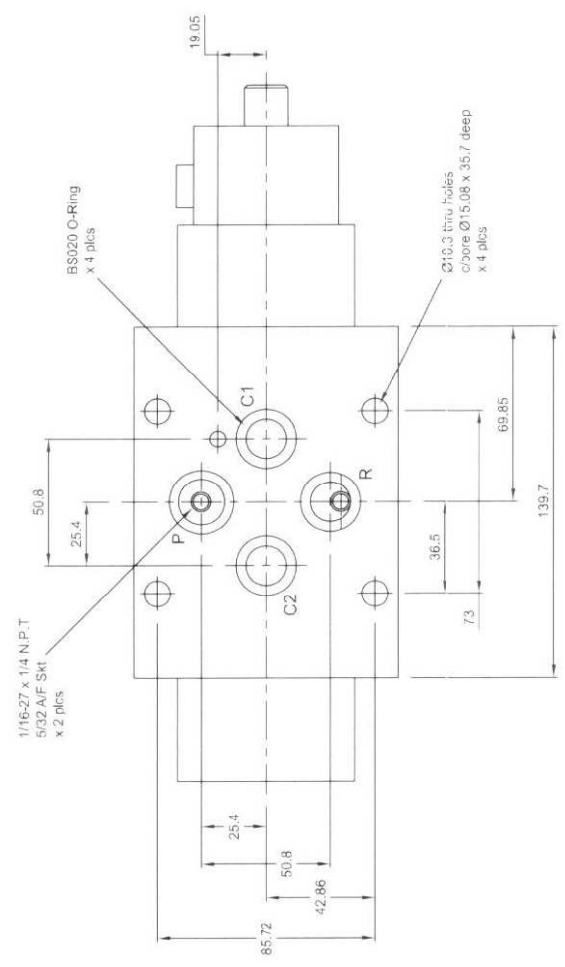
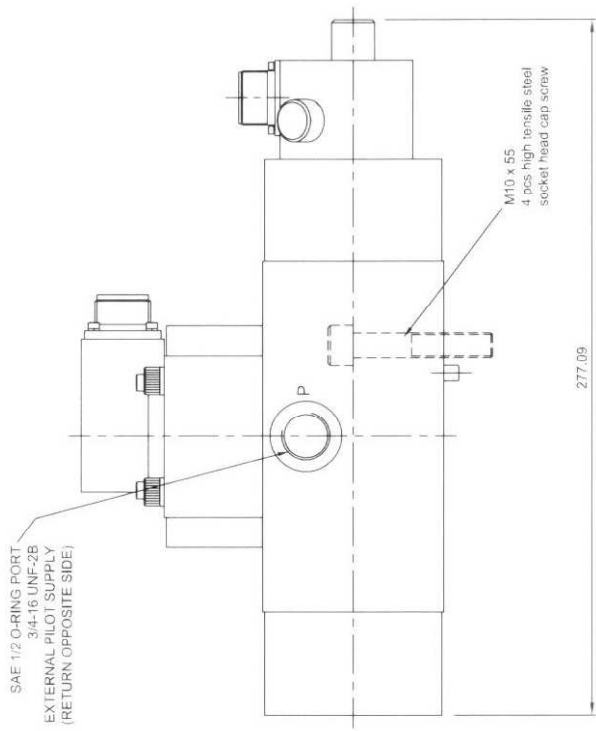
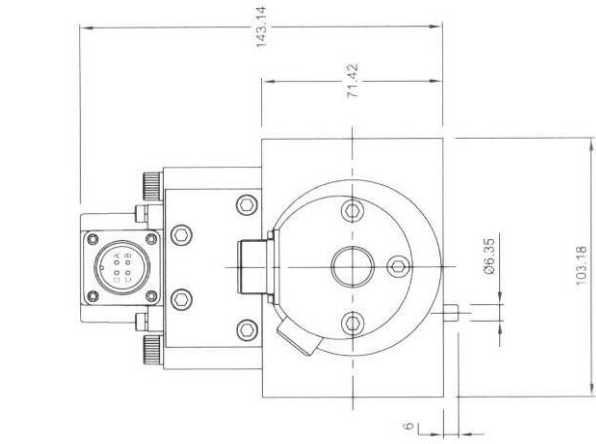


star

Model 60FC

Three Stage High Response Servovalve

Rated Flow (Qr)	230 litres/min $\pm 10\%$	70 Bar DP
Spool Diameter	20,6 mm	
Main spool drive area	333,3 mm ²	
Rated Spool Stroke	$\pm 2,5$ mm	$\pm 3,3$ mm mechanical stops
Lap Condition	0,036 mm	nominal overlap
Rated Pressure (Ps)	280 Bar	
Supply Proof Pressure	315 Bar	Control ports are the same
Return Proof Pressure	210 Bar	
Main Valve Internal Leakage	< 5,5 litres/min	140 Bar Supply Pressure
Frequency Response $\pm 100\%$ Input	550-HR -3 dB : 70 Hz 90° : 60 Hz	210 Bar supply pressure (typical)
Step Response	< 8 ms	for 100% output
Null Shift 30% Ps change 30 °C temp change	< 2% < 2%	
Hysteresis	< 0,5%	
Threshold	< 0,3%	
Fluid Temperature Range	0 ~ 80 °C	
Fluids	Petroleum based	
Seal Material	Nitrile 90 shore	
System Filtration	NAS 1638 class 7. ISO 4406 code 16/13	minimum
Mass	17 kg	
Pilot Valve Specification		
Rated Pressure (Psp)	210 Bar	
Model	550-HR	
Rated Flow (Qrp)	19 litres/min	70 Bar DP
Rated Input	± 40 Ma	differential
Coil Resistance	80 Ω ($\pm 10\%$)	@ ± 25 °C
Internal Leakage	< 1,2 litres/min	140 Bar supply pressure
Seal Material	Nitrile 90 shore	
LVDT Specification (alternatives available)		
Linear range	$\pm 2,5$ mm	
Sensitivity	2,43 volts/inch/volt	@ 4 KHz, 3,75 Vrms
Excitation frequency	2-4 KHz	Recommended
Excitation voltage	15 Vrms (max)	
DC Resistance	160 ohms per coil	

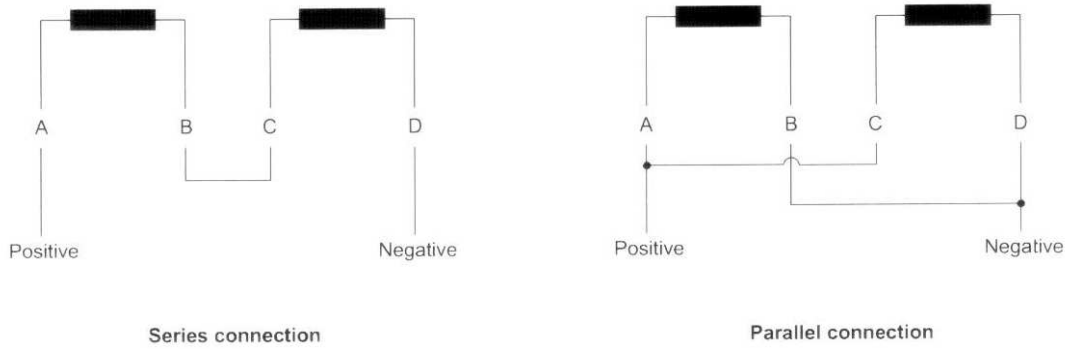


Model 60FC

Dimensions in millimeters
3rd angle projection

Filename

Pilot stage coil connections

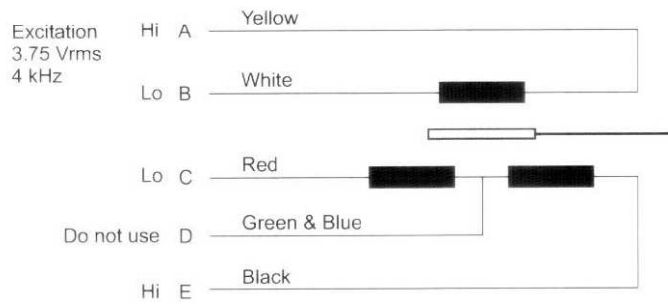


Coil options

Coil specification		Series connection		Parallel connection	
Rated signal [mA]	Resistance per coil [Ω]	Input current [mA]	Effective resistance [Ω]	Input current [mA]	Effective resistance [Ω]
15	200	7.5	400	15	100
40	80	20	160	40	40
200	22	100	44	200	11

Mating electrical connector
MS3106F-14S-2S (MIL-C-5015)

Main stage LVDT coil connections



Mating electrical connector
MS3106F-14S-5S (MIL-C-5015)

Output flow polarity

Flow in the direction of P→C1, C2→R will occur with the pilot and main stage coils configured as above.